
Appendix U. Unrecorded Architectural Resources by Property Type in CARA



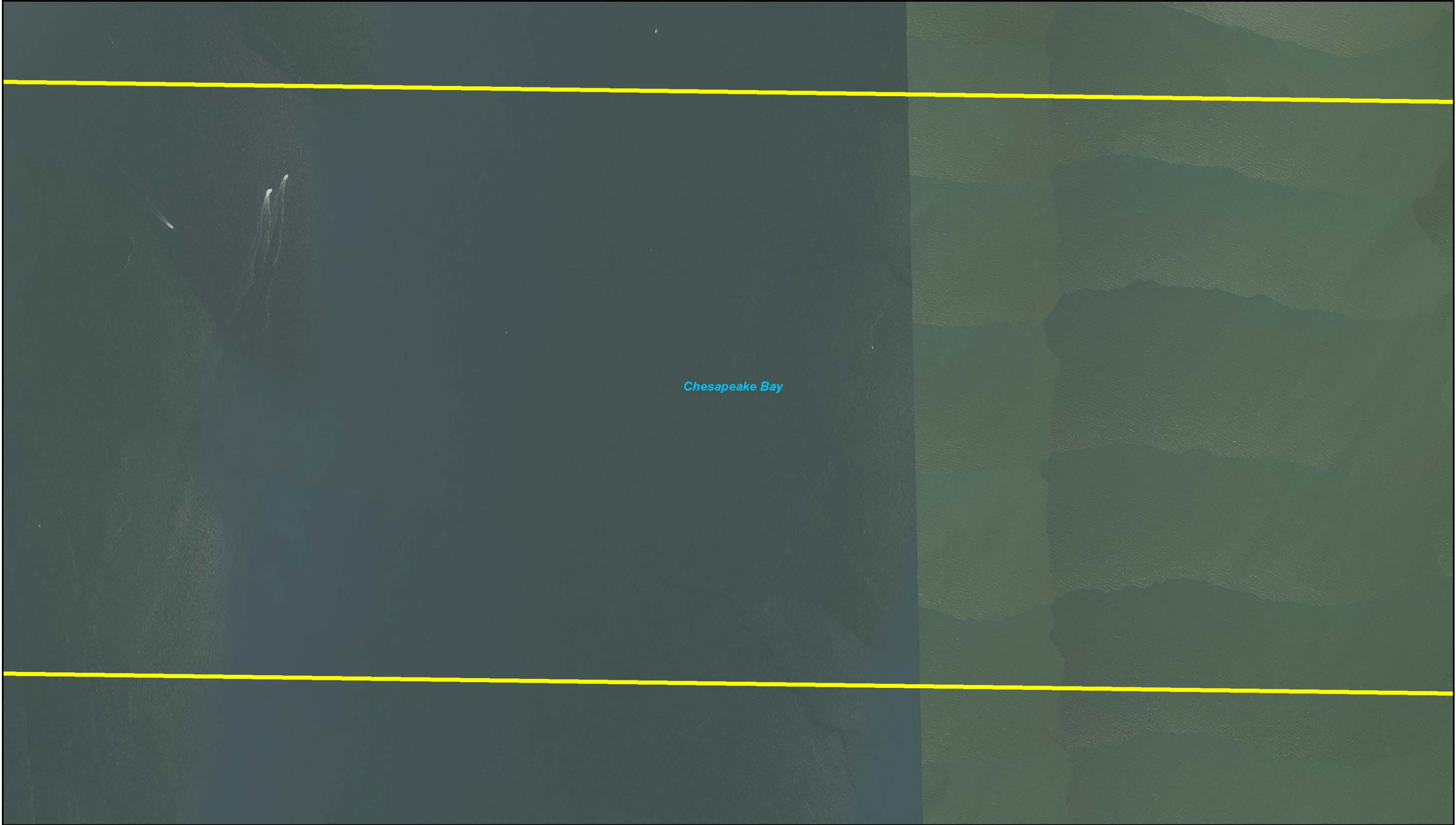
Legend

CARA Corridors	Agricultural	Commercial	Residential
Unrecorded Districts	Mixed-Use	Miscellaneous	

* For the Unrecorded Districts, only areas within the CARA were reviewed. Actual boundaries of the Unrecorded Districts may extend beyond the limits of the CARA.

0 395 790 1,580 Feet

CHESAPEAKE BAY CROSSING STUDY
TIER 1 NEPA
Unrecorded Architectural Resources by Property Type - Corridor 6
Page 2 of 6



Legend

 CARA Corridors	 Agricultural	 Commercial	 Residential
 Unrecorded Districts	 Mixed-Use	 Miscellaneous	


0 395 790 1,580 Feet






**CHESAPEAKE
BAY CROSSING STUDY**
TIER 1 NEPA

*Unrecorded Architectural Resources
by Property Type - Corridor 6*

Page 3 of 6

* For the Unrecorded Districts, only areas within the CARA were reviewed. Actual boundaries of the Unrecorded Districts may extend beyond the limits of the CARA.



Legend

CARA Corridors	Agricultural	Commercial	Residential
Unrecorded Districts	Mixed-Use	Miscellaneous	

* For the Unrecorded Districts, only areas within the CARA were reviewed. Actual boundaries of the Unrecorded Districts may extend beyond the limits of the CARA.

0 395 790 1,580 Feet

N

Federal Highway Administration

MDTA
Maryland Transportation Authority

CHESAPEAKE BAY CROSSING STUDY
TIER 1 NEPA

Unrecorded Architectural Resources by Property Type - Corridor 6

Page 4 of 6



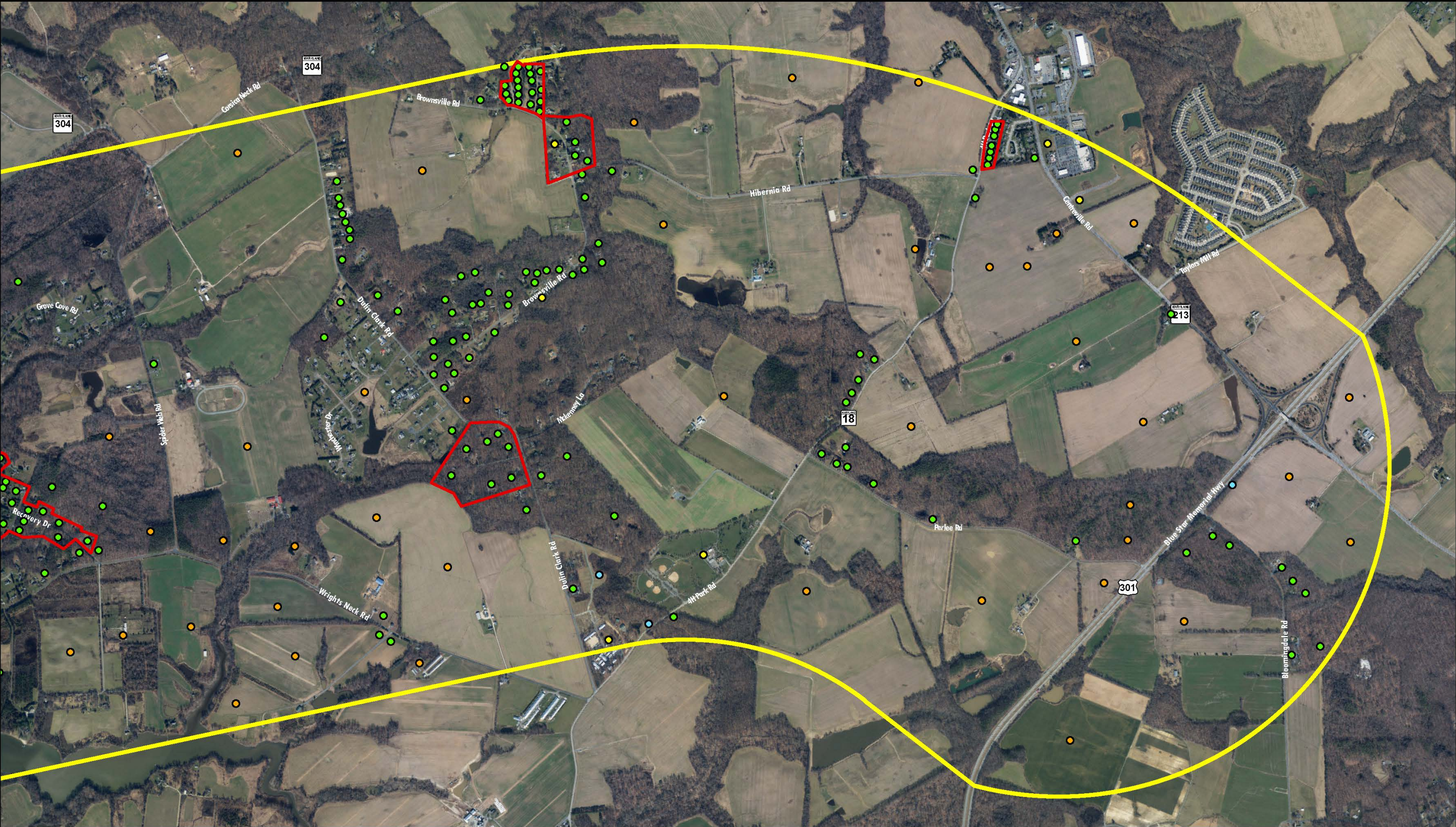
Legend

CARA Corridors	Agricultural	Commercial	Residential
Unrecorded Districts	Mixed-Use	Miscellaneous	

* For the Unrecorded Districts, only areas within the CARA were reviewed. Actual boundaries of the Unrecorded Districts may extend beyond the limits of the CARA.

0 395 790 1,580 Feet

CHESAPEAKE BAY CROSSING STUDY
TIER 1 NEPA
Unrecorded Architectural Resources
by Property Type - Corridor 6
Page 5 of 6



Legend

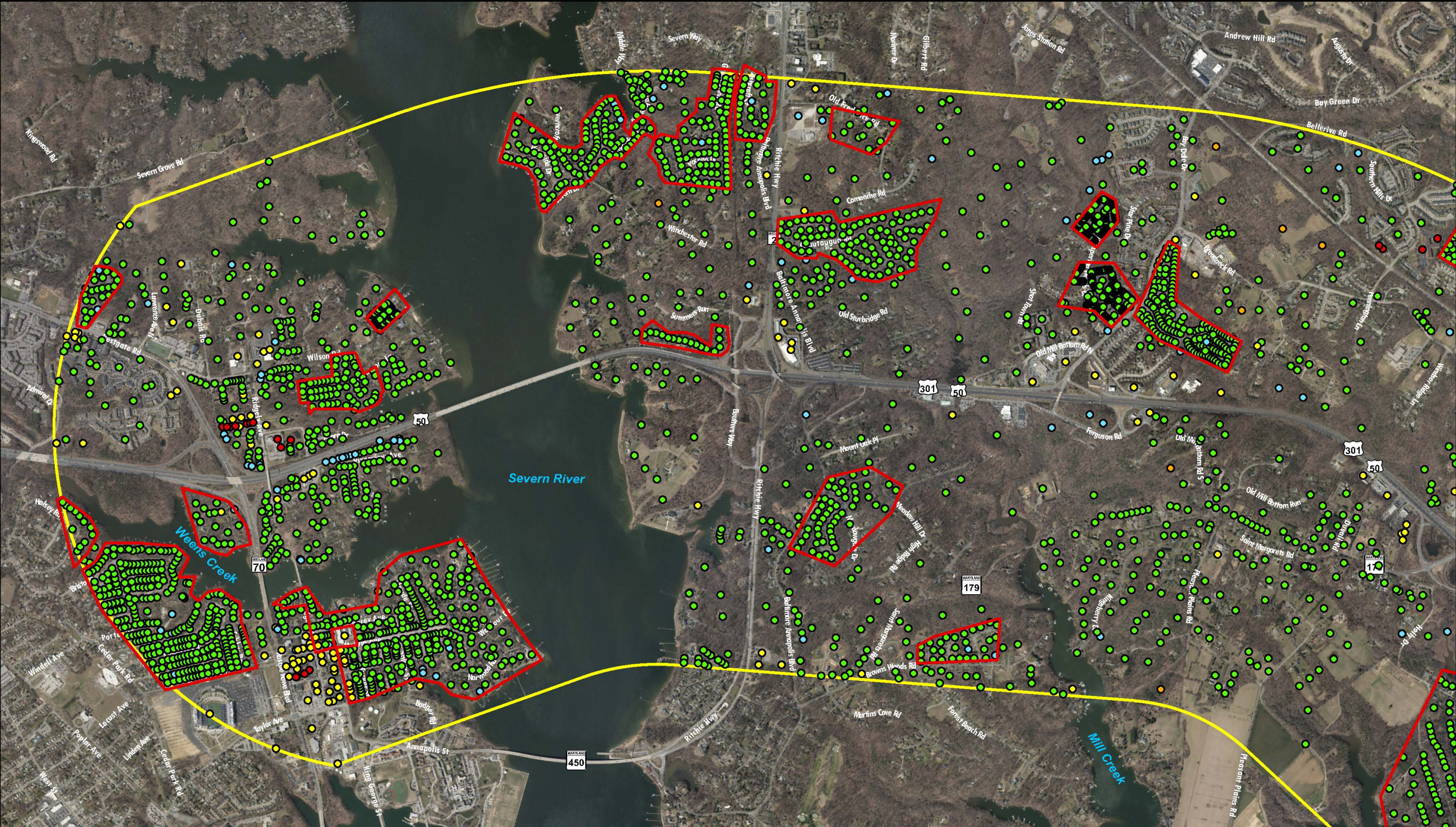
CARA Corridors	Agricultural	Commercial	Residential
Unrecorded Districts	Mixed-Use	Miscellaneous	

* For the Unrecorded Districts, only areas within the CARA were reviewed. Actual boundaries of the Unrecorded Districts may extend beyond the limits of the CARA.

0 395 790 1,580 Feet

MDTA
Maryland Transportation Authority

CHESAPEAKE BAY CROSSING STUDY
TIER 1 NEPA
Unrecorded Architectural Resources by Property Type - Corridor 6
Page 6 of 6



Legend

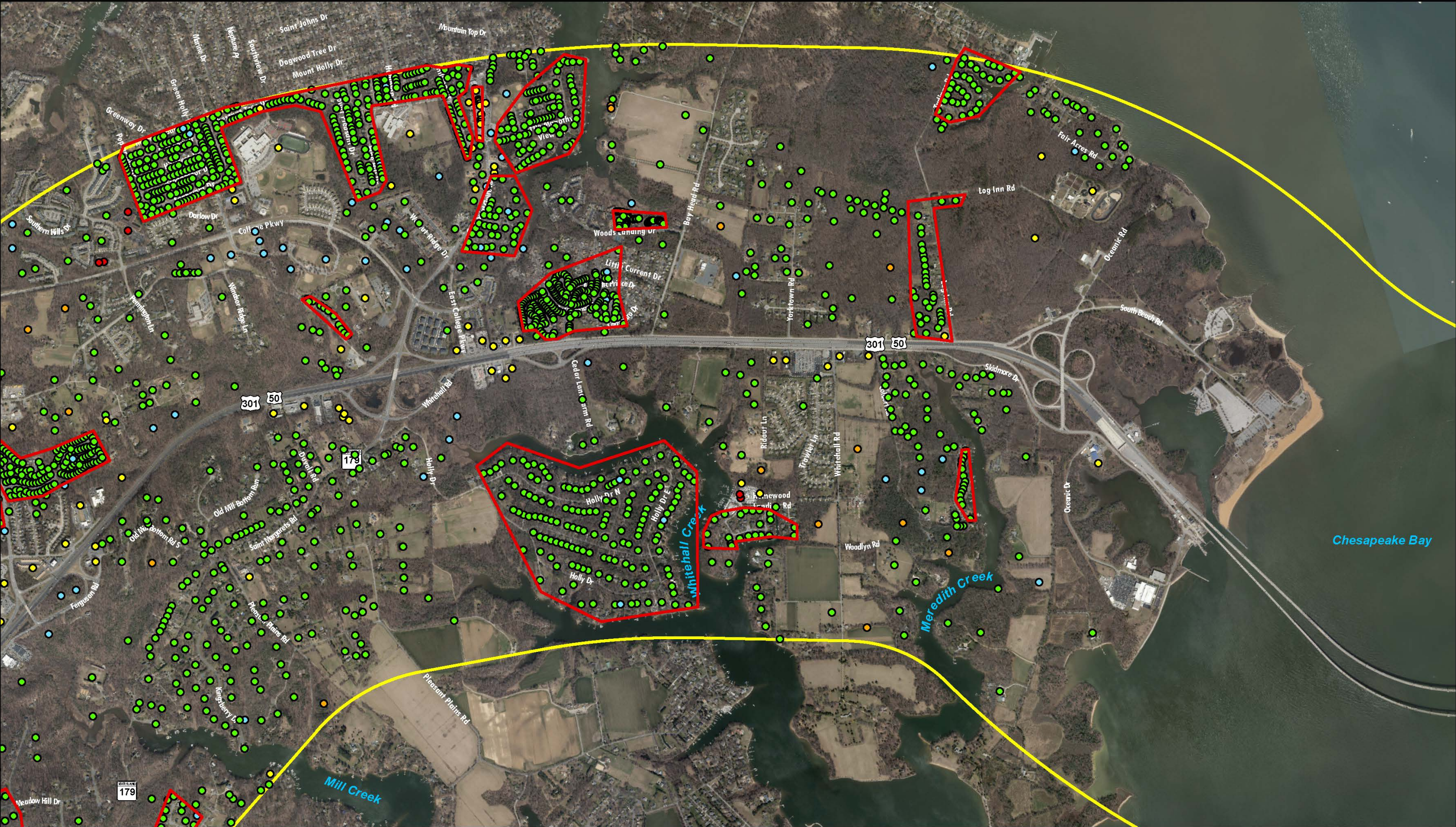
CARA Corridors	Agricultural	Commercial	Residential
Unrecorded Districts	Mixed-Use	Miscellaneous	

* For the Unrecorded Districts, only areas within the CARA were reviewed. Actual boundaries of the Unrecorded Districts may extend beyond the limits of the CARA.

MDTA
Maryland Transportation Authority

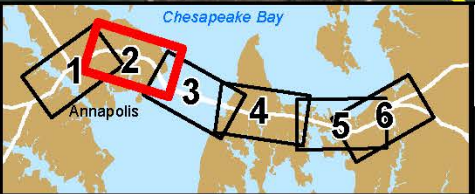
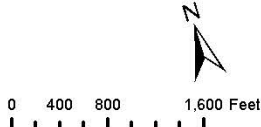
CHESAPEAKE BAY CROSSING STUDY
TIER 1 NEPA
*Unrecorded Architectural Resources
by Property Type - Corridor 7*

Page 1 of 6



- Legend
- | | | | |
|----------------------|--------------|---------------|-------------|
| CARA Corridors | Agricultural | Commercial | Residential |
| Unrecorded Districts | Mixed-Use | Miscellaneous | |

* For the Unrecorded Districts, only areas within the CARA were reviewed. Actual boundaries of the Unrecorded Districts may extend beyond the limits of the CARA.





Legend

CARA Corridors	Agricultural	Commercial	Residential
Unrecorded Districts	Mixed-Use	Miscellaneous	

* For the Unrecorded Districts, only areas within the CARA were reviewed. Actual boundaries of the Unrecorded Districts may extend beyond the limits of the CARA.

0 400 800 1,600 Feet

CHESAPEAKE BAY CROSSING STUDY
TIER 1 NEPA
Unrecorded Architectural Resources
by Property Type - Corridor 7
Page 3 of 6



Legend

CARA Corridors	Agricultural	Commercial	Residential
Unrecorded Districts	Mixed-Use	Miscellaneous	

* For the Unrecorded Districts, only areas within the CARA were reviewed. Actual boundaries of the Unrecorded Districts may extend beyond the limits of the CARA.

0 400 800 1,600 Feet

CHESAPEAKE BAY CROSSING STUDY
TIER 1 NEPA
Unrecorded Architectural Resources
by Property Type - Corridor 7
Page 4 of 6



Legend

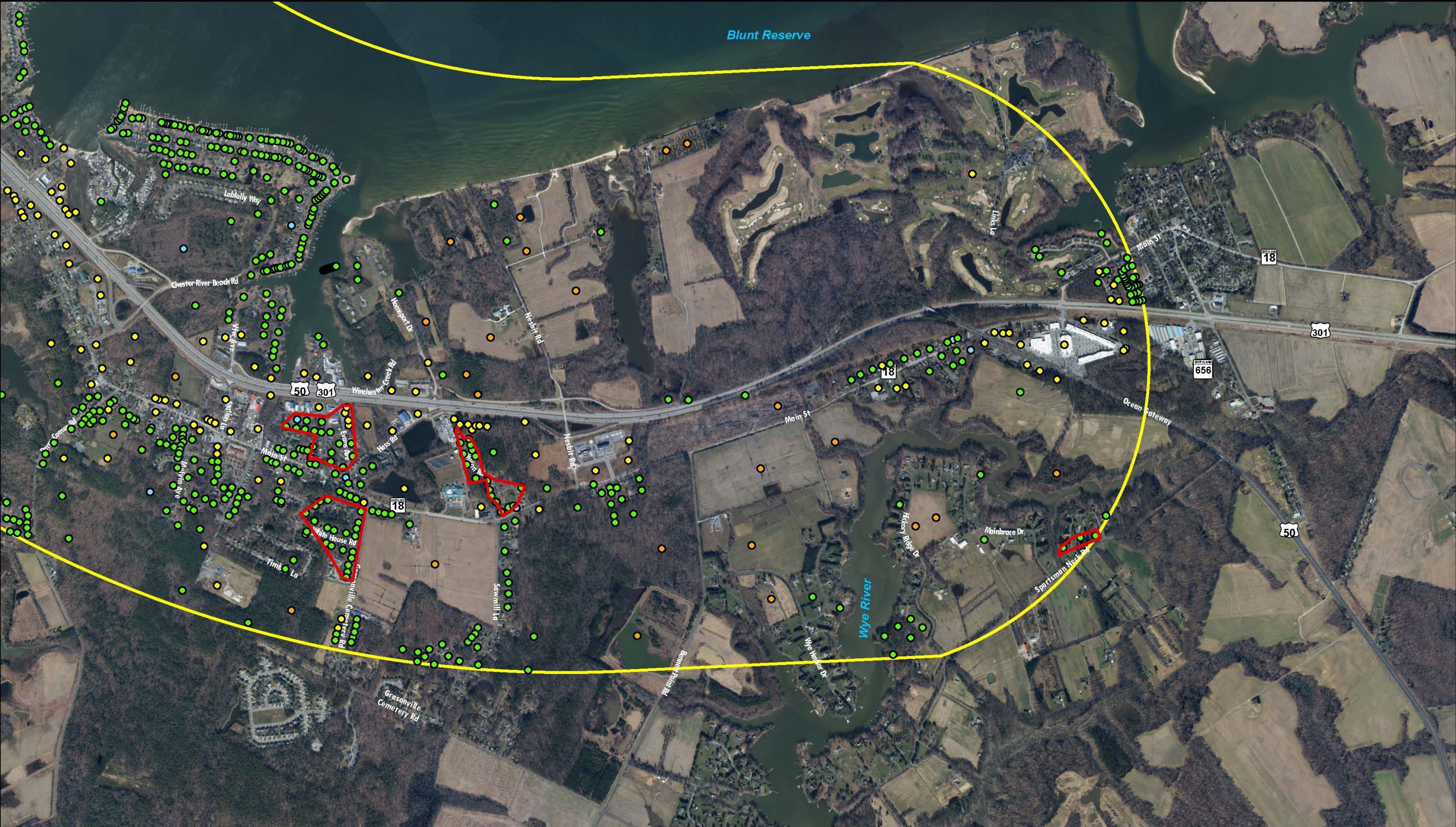
CARA Corridors	Agricultural	Commercial	Residential
Unrecorded Districts	Mixed-Use	Miscellaneous	

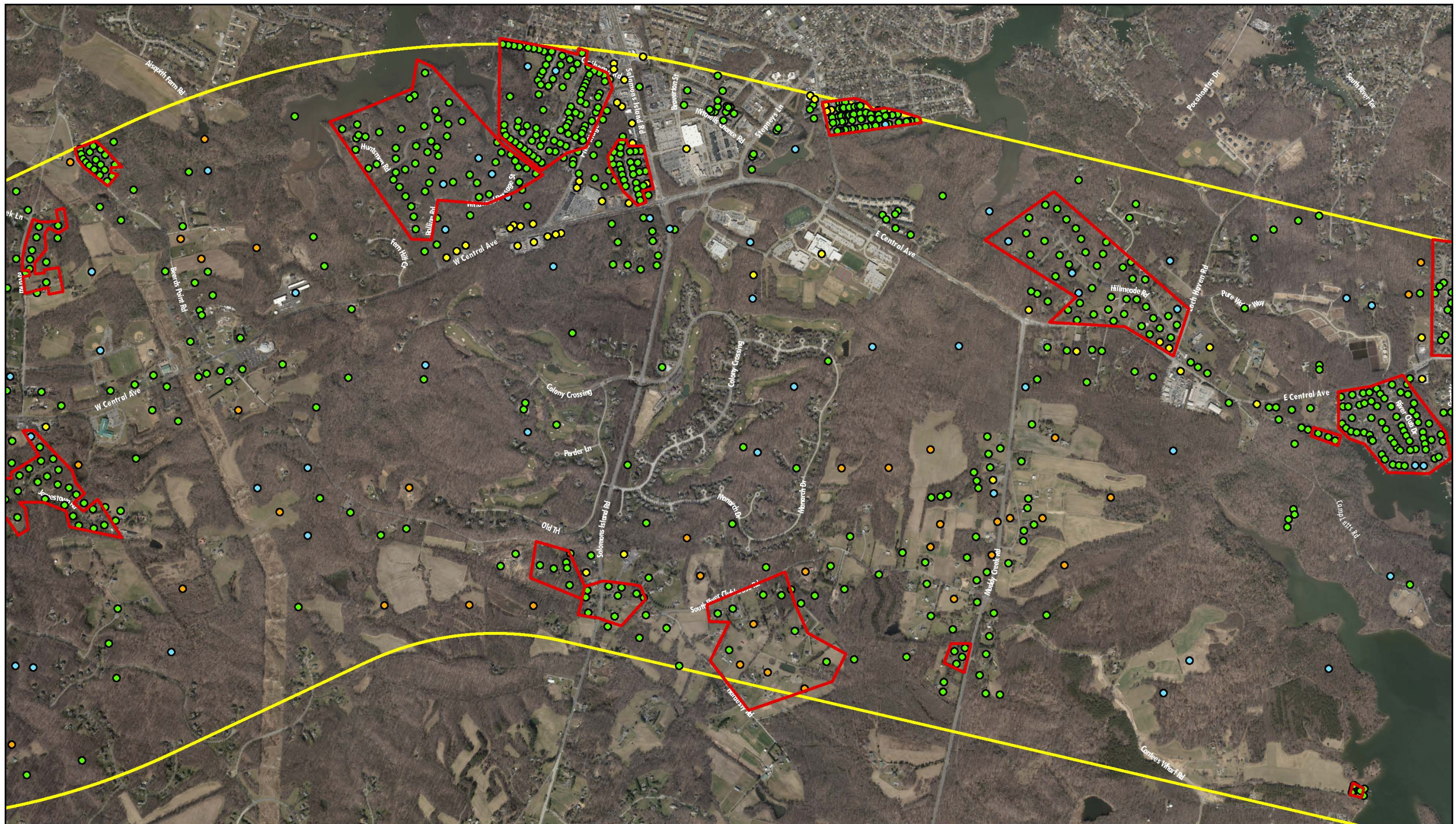
* For the Unrecorded Districts, only areas within the CARA were reviewed. Actual boundaries of the Unrecorded Districts may extend beyond the limits of the CARA.

0 400 800 1,600 Feet

N

CHESAPEAKE BAY CROSSING STUDY
TIER 1 NEPA
Unrecorded Architectural Resources
by Property Type - Corridor 7
Page 5 of 6

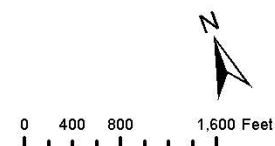




Legend

 CARA Corridors	● Agricultural	● Commercial	● Residential
 Unrecorded Districts	● Mixed-Use	● Miscellaneous	

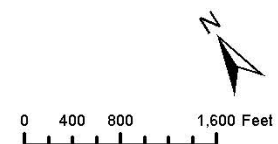
* For the Unrecorded Districts, only areas within the CARA were reviewed. Actual boundaries of the Unrecorded Districts may extend beyond the limits of the CARA.





- Legend**
- | | | | |
|---|--|---|--|
| CARA Corridors | ● Agricultural | ● Commercial | ● Residential |
| Unrecorded Districts | ● Mixed-Use | ● Miscellaneous | |

* For the Unrecorded Districts, only areas within the CARA were reviewed. Actual boundaries of the Unrecorded Districts may extend beyond the limits of the CARA.



**CHESAPEAKE
BAY CROSSING STUDY**
TIER 1 NEPA

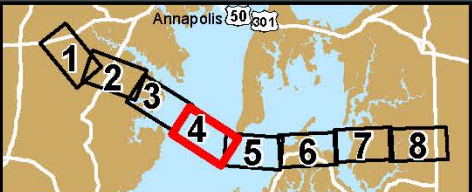
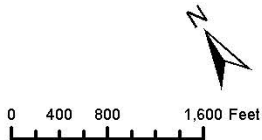
*Unrecorded Architectural Resources
by Property Type - Corridor 8*

Page 3 of 8



- Legend**
- | | | | | | | | |
|--|-----------------------------|---|---------------------|---|----------------------|---|--------------------|
|  | CARA Corridors |  | Agricultural |  | Commercial |  | Residential |
|  | Unrecorded Districts |  | Mixed-Use |  | Miscellaneous | | |

* For the Unrecorded Districts, only areas within the CARA were reviewed. Actual boundaries of the Unrecorded Districts may extend beyond the limits of the CARA.

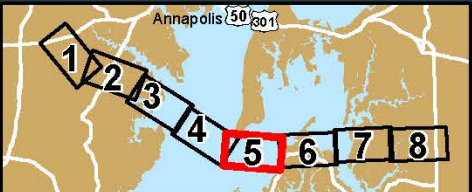
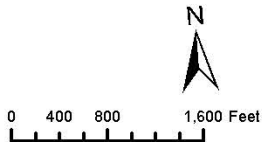




Legend

	CARA Corridors		Agricultural		Commercial		Residential
	Unrecorded Districts		Mixed-Use		Miscellaneous		

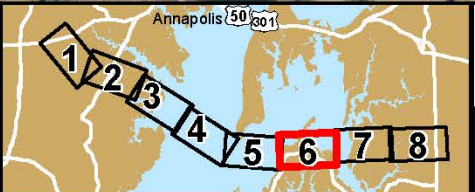
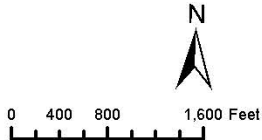
* For the Unrecorded Districts, only areas within the CARA were reviewed. Actual boundaries of the Unrecorded Districts may extend beyond the limits of the CARA.

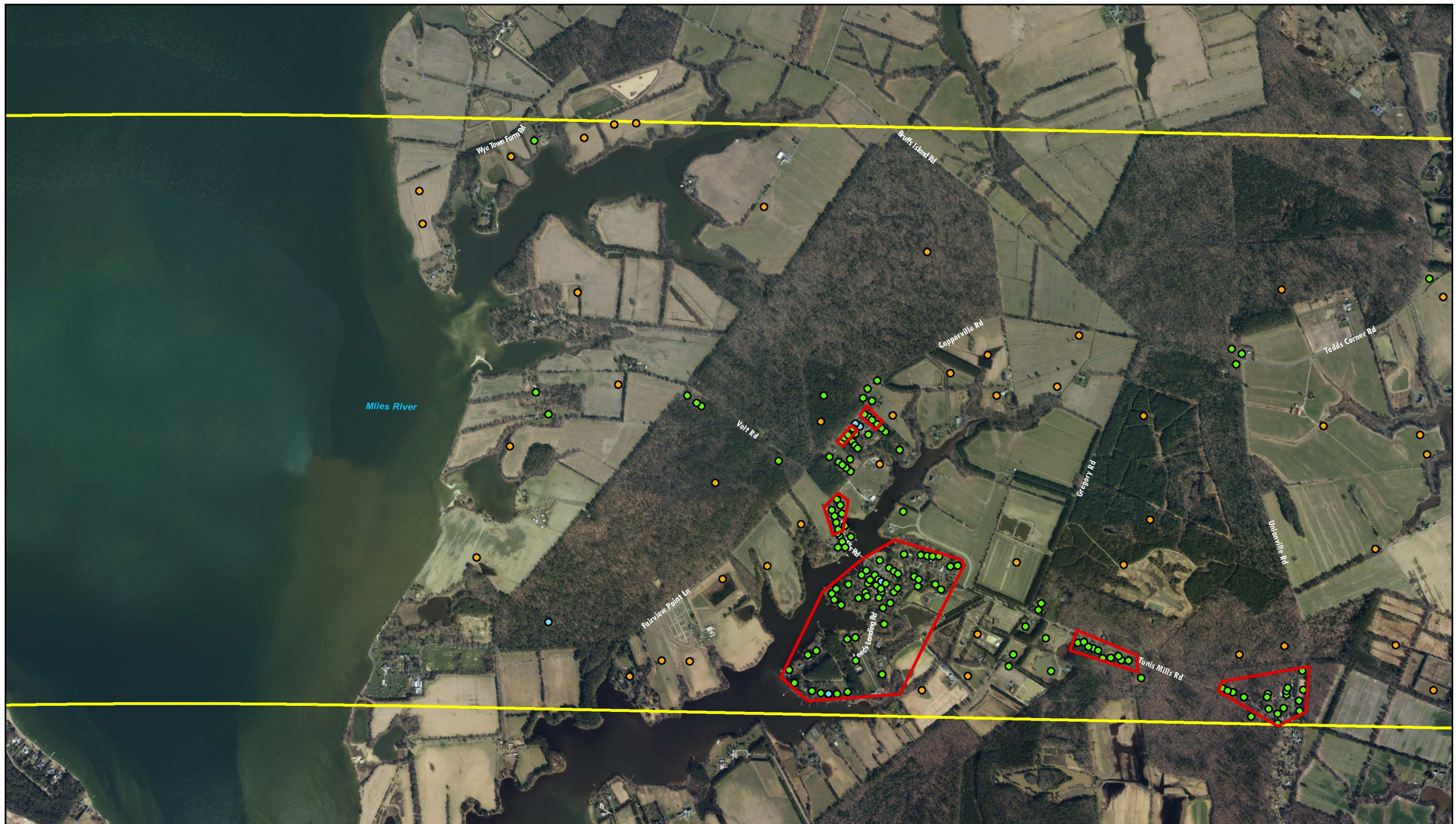




- Legend
- | | | | | | | | |
|--|----------------------|--|--------------|--|---------------|--|-------------|
| | CARA Corridors | | Agricultural | | Commercial | | Residential |
| | Unrecorded Districts | | Mixed-Use | | Miscellaneous | | |

* For the Unrecorded Districts, only areas within the CARA were reviewed. Actual boundaries of the Unrecorded Districts may extend beyond the limits of the CARA.

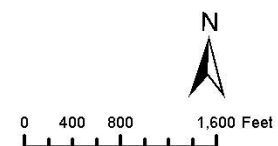




Legend

- | | | | |
|--|--|---|--|
| CARA Corridors | ● Agricultural | ● Commercial | ● Residential |
| Unrecorded Districts | ● Mixed-Use | ● Miscellaneous | |

* For the Unrecorded Districts, only areas within the CARA were reviewed. Actual boundaries of the Unrecorded Districts may extend beyond the limits of the CARA.





Legend

CARA Corridors	Agricultural	Commercial	Residential
Unrecorded Districts	Mixed-Use	Miscellaneous	

* For the Unrecorded Districts, only areas within the CARA were reviewed. Actual boundaries of the Unrecorded Districts may extend beyond the limits of the CARA.

