

Chesapeake
BAY CROSSING STUDY
TIER 2 NEPA

Virtual Transit and
Bicycle/Pedestrian
Listening Meeting

June 27, 2023

WELCOME



Maryland
Transportation
Authority

Introductions



ANDREW BING
Facilitator,
Tier 2 Study
Listening Meeting

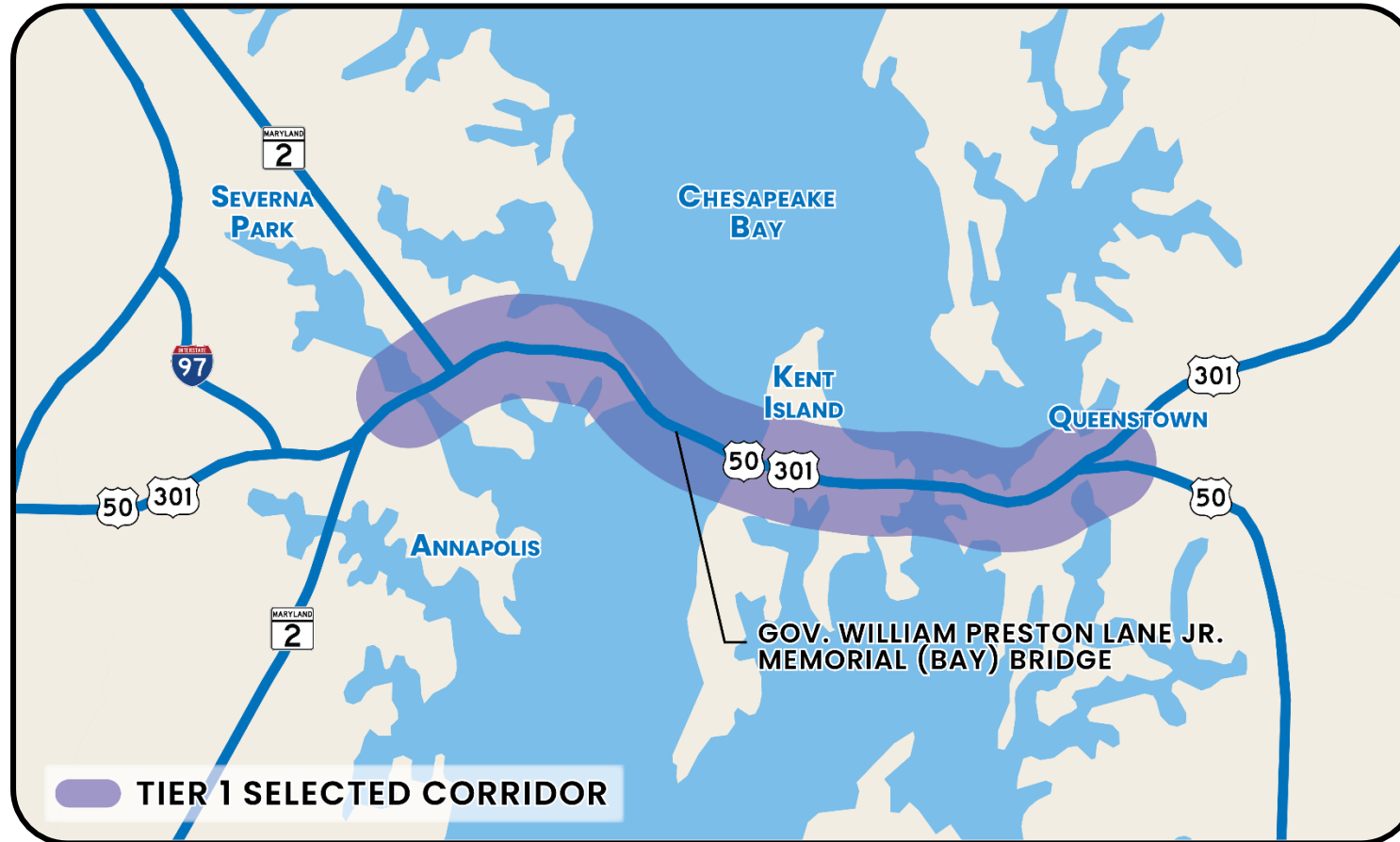


MELISSA WILLIAMS
Director, Division of Planning
and Program Development,
Maryland Transportation
Authority



HEATHER LOWE
Project Manager,
Division of Planning and
Program Development,
Maryland Transportation
Authority

Tier 2 Study Area



- The Tier 2 Study is focusing on the approximately two-mile wide Selected Corridor Alternative (Corridor 7) approved by FHWA in the Record of Decision from the Tier 1 Study.
- Corridor 7 extends approximately 22-miles from the Severn River Bridge in Anne Arundel County to the U.S 50/U.S. 301 split in Queen Anne's County.

Title VI Questionnaire

What is Title VI?

- ▶ Title VI of the Civil Rights Act of 1964 provides that no person shall on the ground of race, color, national origin, sex, English proficiency, or disabilities be excluded from participation in, be denied the benefits of, or be subjected to discrimination under any program or activity.

Should you need LEP assistance or if you believe the MDTA is not meeting the expectations of Title VI, you may direct questions, concerns, or file a complaint with:

Ryan Coleman

EEO Title VI Manager
Maryland Transportation Authority
Division of Civil Rights and Fair Practice
2310 Broening Highway
Baltimore, MD 21224

410-537-5660 (Direct) | 410-537-1044 (Fax)

mdtatitlevipublicparticipationsurvey@mdta.maryland.gov

Why is Title VI Important?

- ▶ Title VI ensures that public services, including transportation, are provided in an equitable and nondiscriminatory manner.
- ▶ Title VI provides opportunities for public participation in decision-making without regard to race, color, or national origin, including populations with Limited English Proficiency (LEP).

Please Fill Out a Survey by Clicking or Scanning the Link Below. The MDTA strives to involve all groups relevant to its Study in its public involvement activities. Please fill out a Demographic Information Survey to assist the MDTA in planning outreach to communities during the Study.



Agenda

- ▶ Brief presentation of existing and planned Study Area transit service and bicycle/pedestrian facilities.
- ▶ Conduct live polling of questions the study team would like public feedback on.
- ▶ Receive public comments and suggestions regarding how transit service and bicycle/pedestrian facilities could be considered in the Tier 2 Study.

Chesapeake BAY CROSSING STUDY

TIER 2 NEPA



Transit and Bicycle/Pedestrian Presentation



Transit Presentation Overview

- ▶ Review previous MDTA transit studies
- ▶ Review existing and planned transit service
- ▶ Comments will be taken at the end of the bicycle and pedestrian presentation.



Tier 1 Study: Transit Findings

Explored Modal and Operational Alternatives:



All the above were eliminated as stand-alone Alternatives during the Tier 1 Study and are being considered in the Tier 2 Study in combination with other alternatives.

Existing Transit Service in the Study Area



MTA Commuter Bus



Annapolis Transit

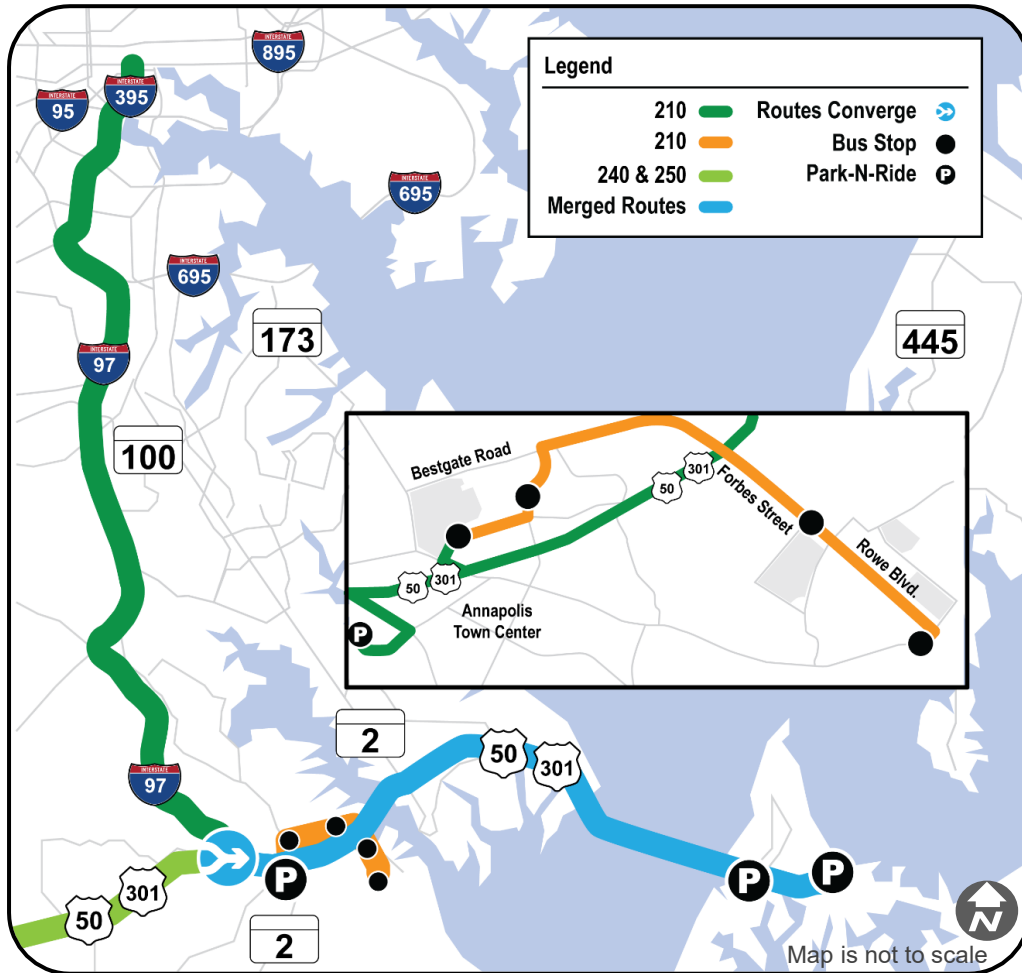


Anne Arundel County Transit



Queen Anne's County Ride

Existing Transit Service

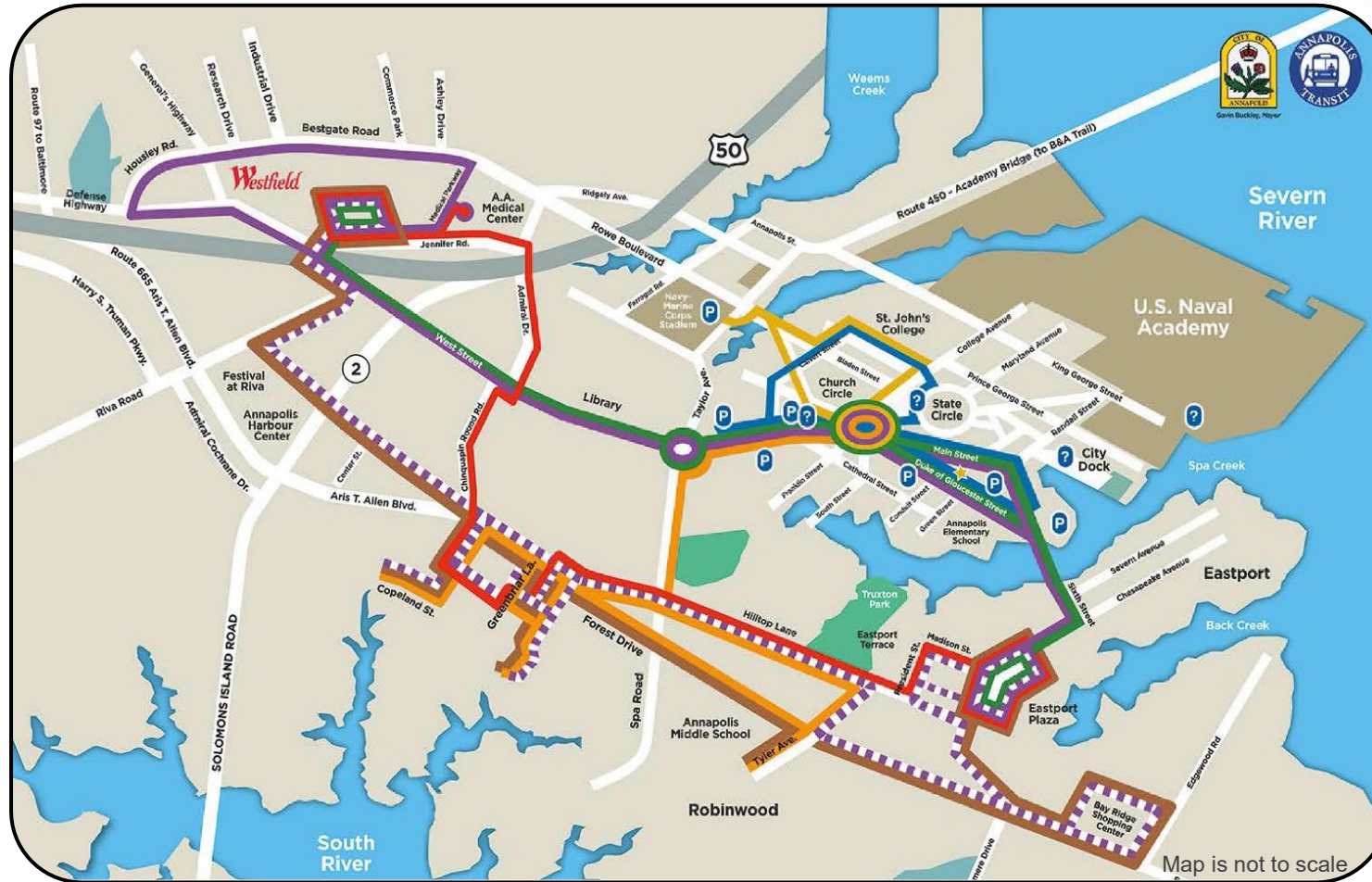


MTA Commuter Bus

- ▶ 240/250 - Kent Island & Davidsonville - Washington DC
- ▶ 210 - Kent Island - Annapolis/Baltimore

Note: There are no existing ferries or passenger rail routes across the Bay.

Existing Transit Service



Annapolis Transit

- ▶ 8 Fixed Routes
- ▶ ADA Paratransit Service

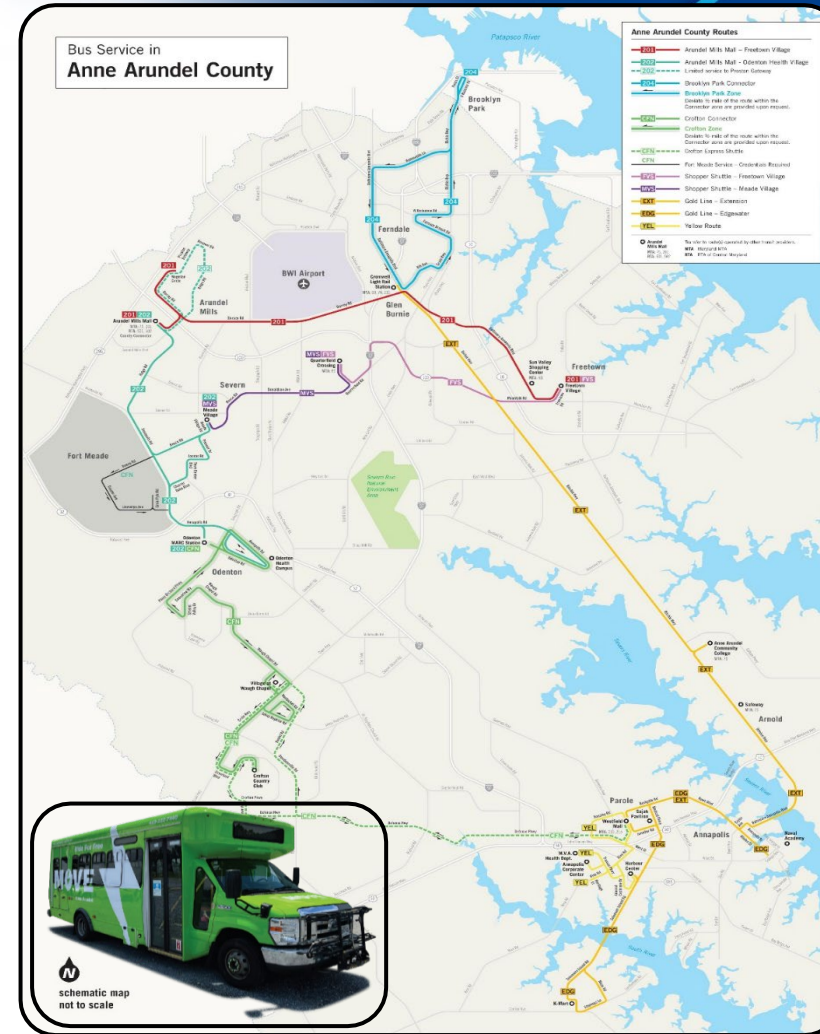
LEGEND

- | | | | |
|--|--------------|--|---------------------|
| | RED ROUTE | | PURPLE ROUTE NORTH |
| | ORANGE ROUTE | | PURPLE ROUTE SOUTH |
| | BROWN ROUTE | | STATE SHUTTLE ROUTE |
| | GREEN ROUTE | | CIRCULATOR ROUTE |

Existing Transit Service

Anne Arundel County Transit

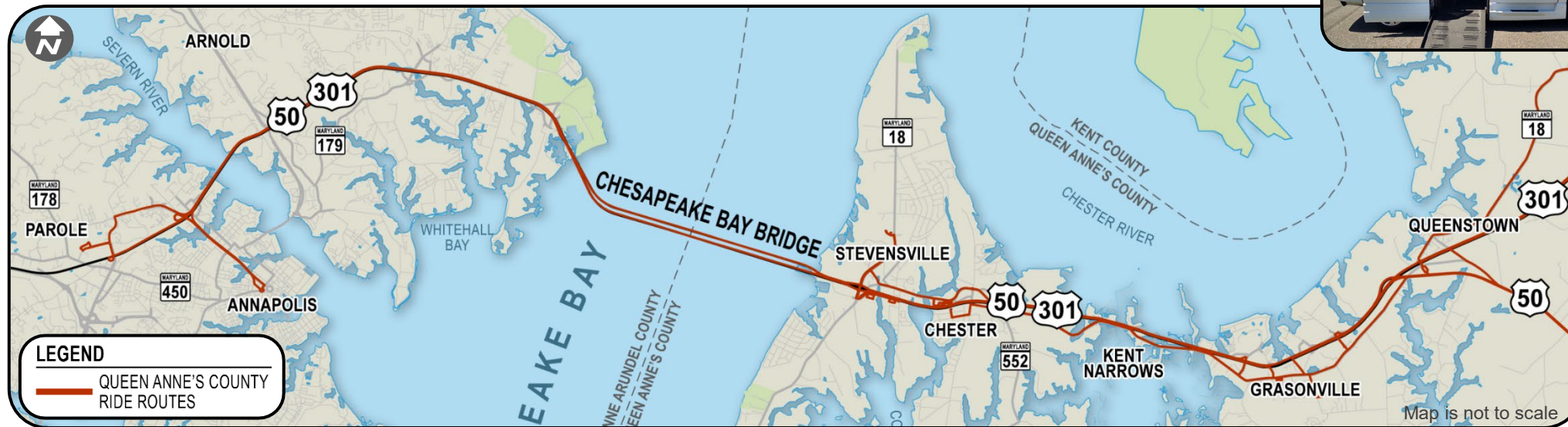
- ▶ 12 Fixed Routes
- ▶ 2 On-Demand Zones



Existing Transit Service

Queen Anne's County Ride

- 4 Deviated Fixed Routes
 - Paratransit service provided by deviating up to $\frac{3}{4}$ mile off fixed route
- County-wide Demand Response Service



Chesapeake BAY CROSSING STUDY TIER 2 NEPA



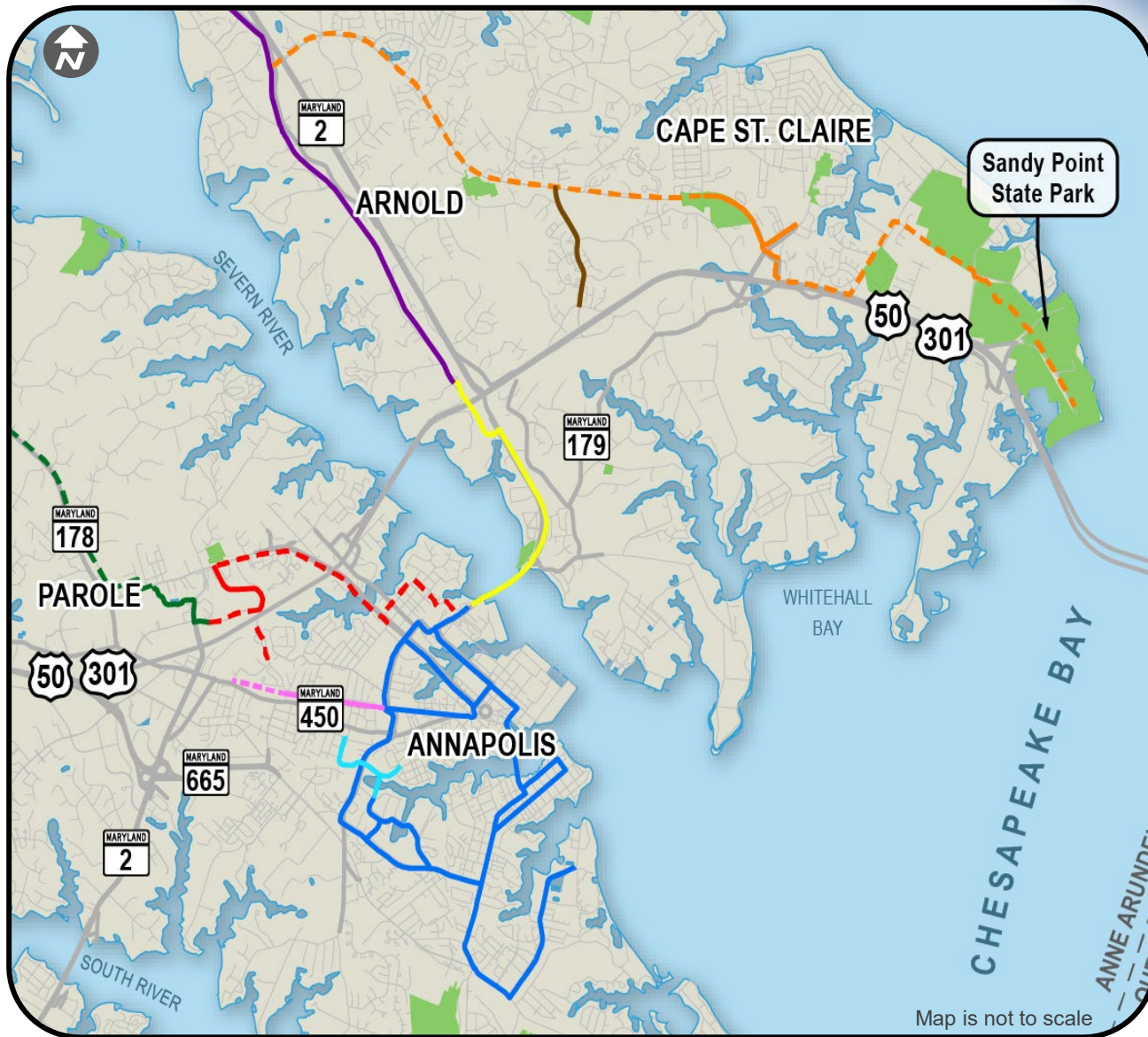
Bicycle and Pedestrian Trails



Bicycle/Pedestrian Presentation Overview

- ▶ Existing and proposed trails
- ▶ Bicycle/pedestrian facilities safety and engineering considerations and benefits
- ▶ Solicit input on bicycle/pedestrian facilities for the Study





Existing and Proposed Trails

Anne Arundel County

► Note: Portions of the proposed trails are currently under construction.

LEGEND

	BROADNECK TRAIL EXISTING		COLONIAL ANNAPOLIS TRAIL
	BROADNECK TRAIL PROPOSED		POPLAR TRAIL EXISTING
	BAYDALE ROAD BIKE PATH		POPLAR TRAIL PROPOSED
	B&A TRAIL EXISTING		SPA CREEK TRAIL
	B&A TRAIL - ANNAPOLIS CONNECTOR		EXISTING TRAIL
	SOUTH SHORE TRAIL EXISTING		PROPOSED TRAIL
	SOUTH SHORE TRAIL PROPOSED		RECREATION & PARK

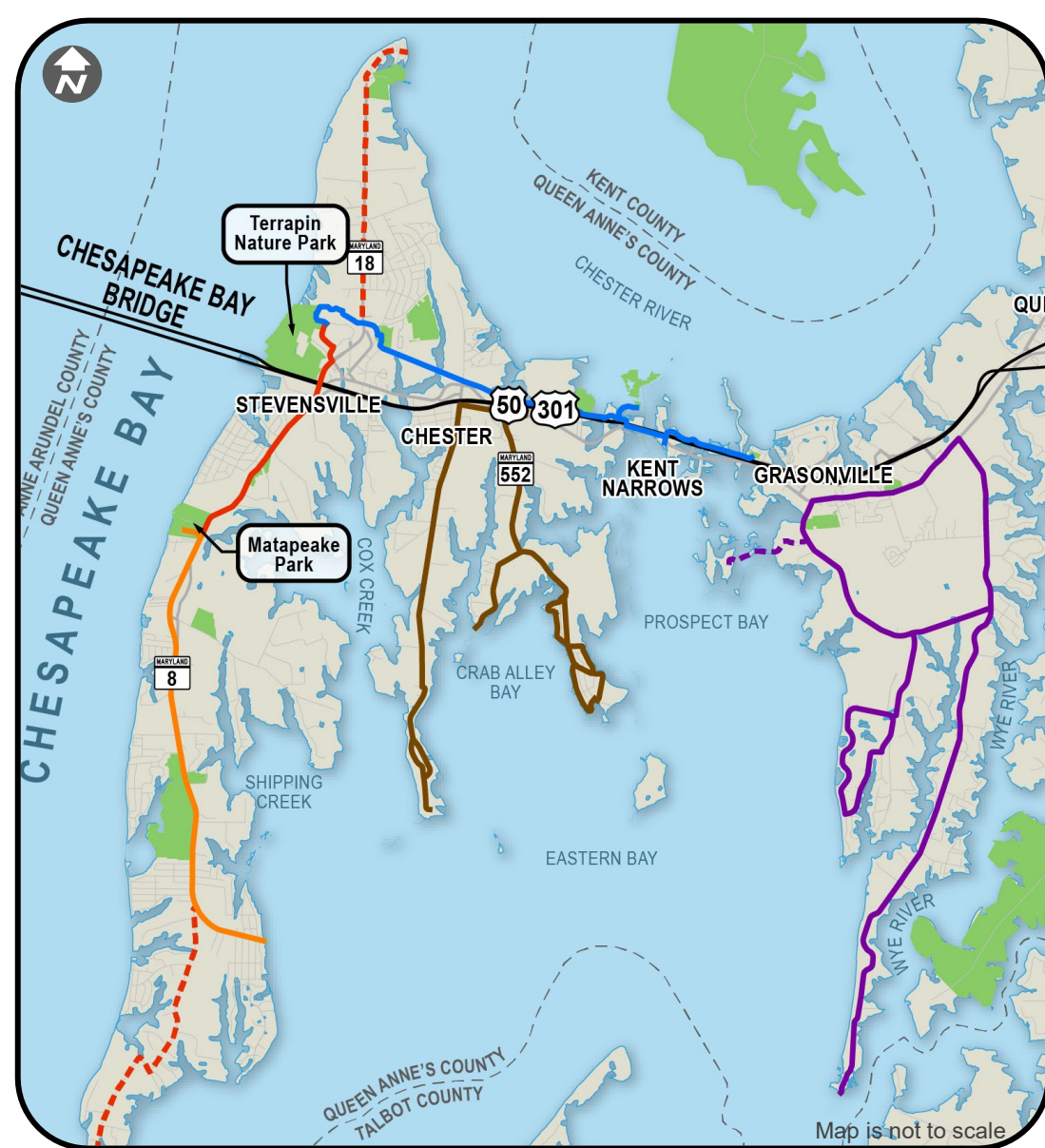
Existing and Proposed Trails

Queen Anne's County

► Note: Portions of the proposed trails are currently under construction.

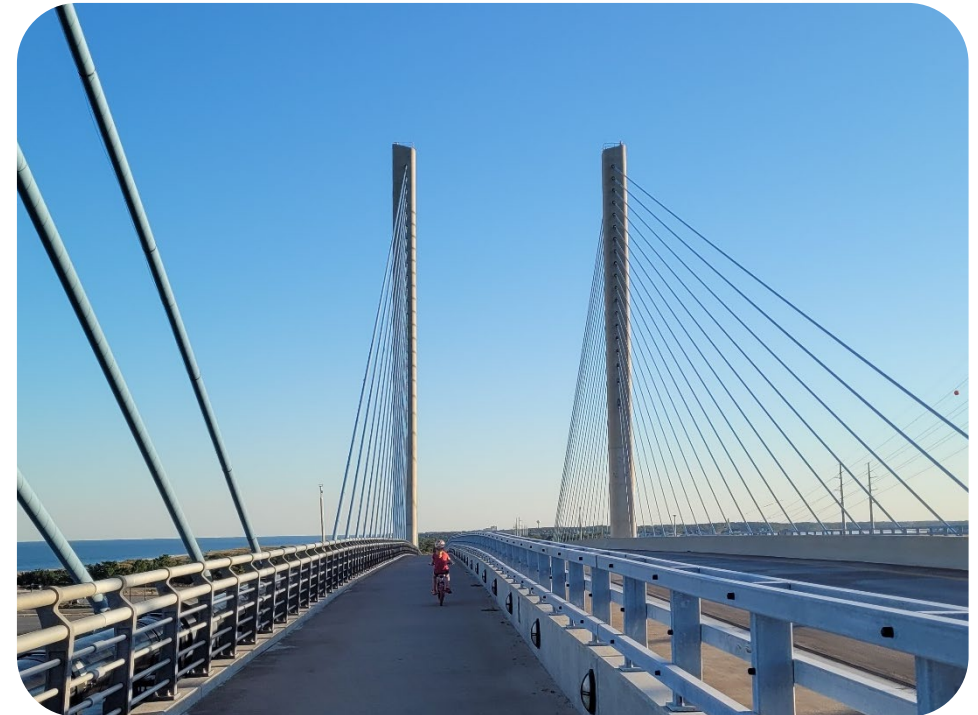
LEGEND

- CROSS ISLAND TRAIL
- SOUTH ISLAND TRAIL
- KENT ISLAND BIKE TRAILS
- QUIET KENT BIKE ROUTE
- GRASONVILLE FLATLANDS BIKE ROUTE
- SIDE TRIPS AND SHORTCUTS
- RECREATION & PARK



Bicycle/Pedestrian Shared-Use Path Considerations

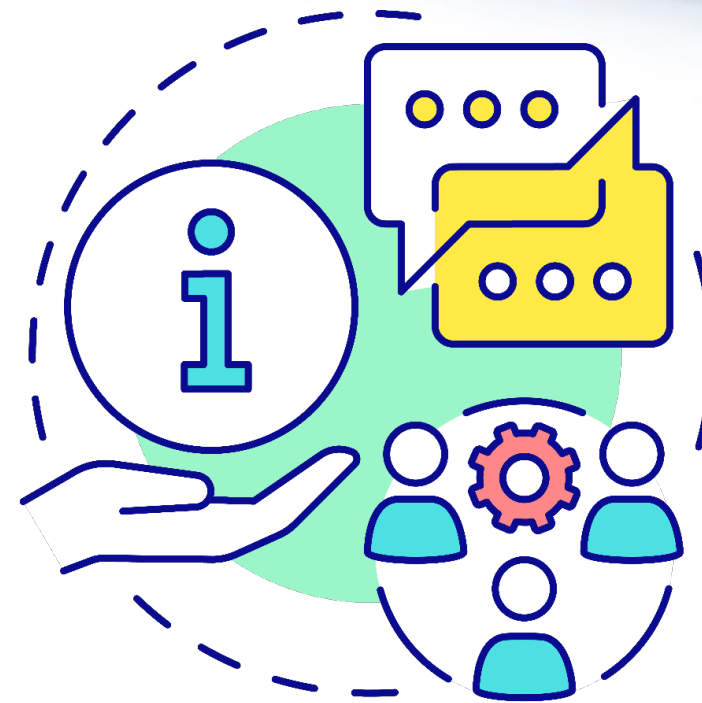
- ▶ Studying the potential of a bicycle and pedestrian facility (shared-use path) across the Bay.
- ▶ Gathering information on similar crossings in height and length and their associated shared use paths.
- ▶ Reviewing industry standards and guidance on shared-use paths along bridges.
- ▶ Considerations identified include:
 - potential usership,
 - safety,
 - design, and
 - maintenance.



Indian River Inlet Bridge

Input for the Tier 2 Study

- ▶ Please provide input on how transit and bicycle/pedestrian facilities could be incorporated into the Study



Feedback • Information • Ideas

Chesapeake BAY CROSSING STUDY TIER 2 NEPA



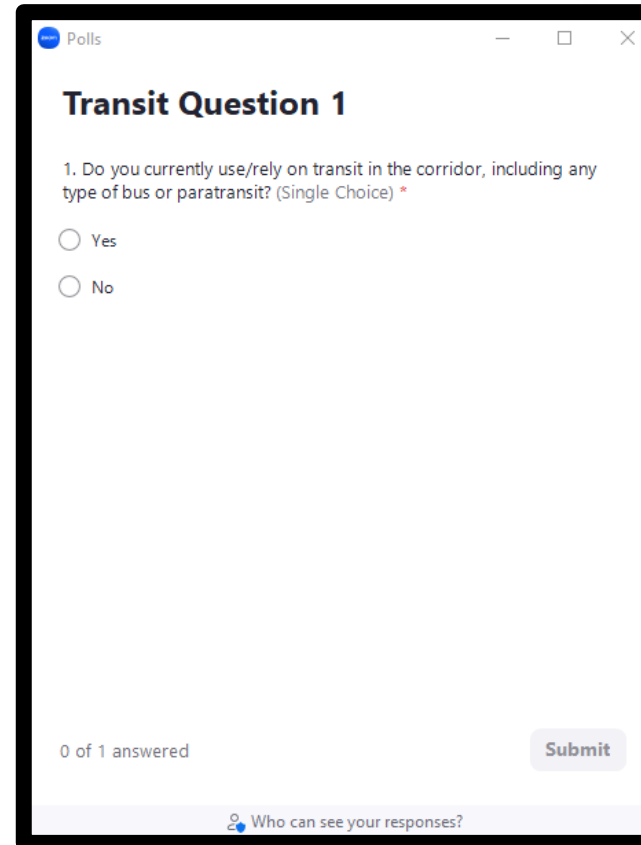
Live Polling



Maryland
Transportation
Authority

Live Polling

- ▶ You will see the question and answer options in a poll notification that appears in the middle of your meeting screen. Once you select your answer be sure to hit the submit button.



The screenshot shows a Zoom poll notification window with the following content:

Transit Question 1

1. Do you currently use/rely on transit in the corridor, including any type of bus or paratransit? (Single Choice) *

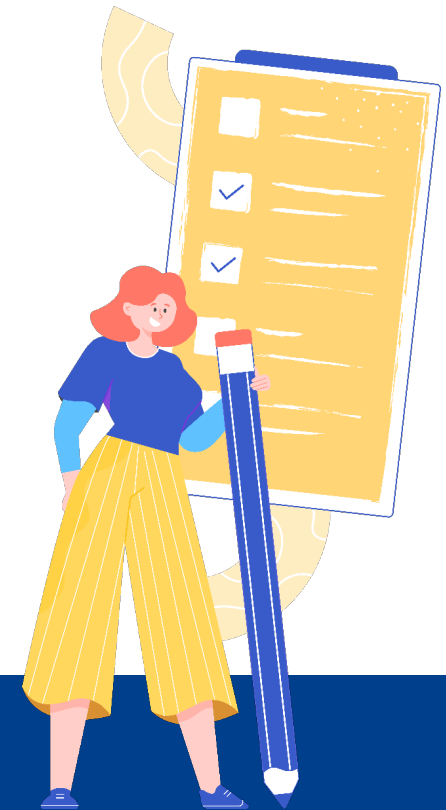
Yes

No

0 of 1 answered

Submit

Who can see your responses?



Live Polling

Transit Question 1



Live Polling

Transit Question 2



Live Polling

Transit Question 3



Live Polling

Transit Question 4



Live Polling

Bicycle/Pedestrian Question 1



Live Polling

Bicycle/Pedestrian Question 2



Live Polling

Bicycle/Pedestrian Question 3



Live Polling

Bicycle/Pedestrian Question 4



Live Polling

Bicycle/Pedestrian Question 5



Live Polling

Bicycle/Pedestrian Question 6



Comment Session

- ▶ Attendees can share their suggestions and thoughts regarding how transit and bicycle/pedestrian facilities could be considered in the Tier 2 Study.
- ▶ Use the raise your hand feature if you would like to speak and we will then allow you to unmute yourself.
 - If you are joining by phone, dial *9 to raise and lower your hand
- ▶ Each speaker will be provided 2 minutes for their comments.

E-ZPass

MARYLAND TOLL ROADS ARE CASHLESS

FOUR WAYS TO PAY **YOUR** WAY!

1



2



3



4



DriveEzMD.com



Your Voice Matters

- ▶ Please remember to fill out the online Transit and Bicycle/ Pedestrian Surveys by July 11th.
- ▶ All comments received will be reviewed and considered during the Tier 2 Study process.



Fill out a survey/comment form:
baycrossingstudy.com



Send comments by mail to:
Bay Crossing Study
2310 Broening Highway
Baltimore, MD 21224



Email Comments to:
info@baycrossingstudy.com



Thank you for participating in the Virtual Transit and Bicycle/Pedestrian Listening Meeting!

- ▶ Please join us in September for our Public Open Houses!
- ▶ Information on the upcoming Public Open Houses and other engagement events may be found on the Study's website www.baycrossingstudy.com

