

# Purpose and Need

**Purpose:** The purpose of the Bay Crossing Study is to consider multiple corridors for providing additional traffic capacity and access across the Chesapeake Bay.

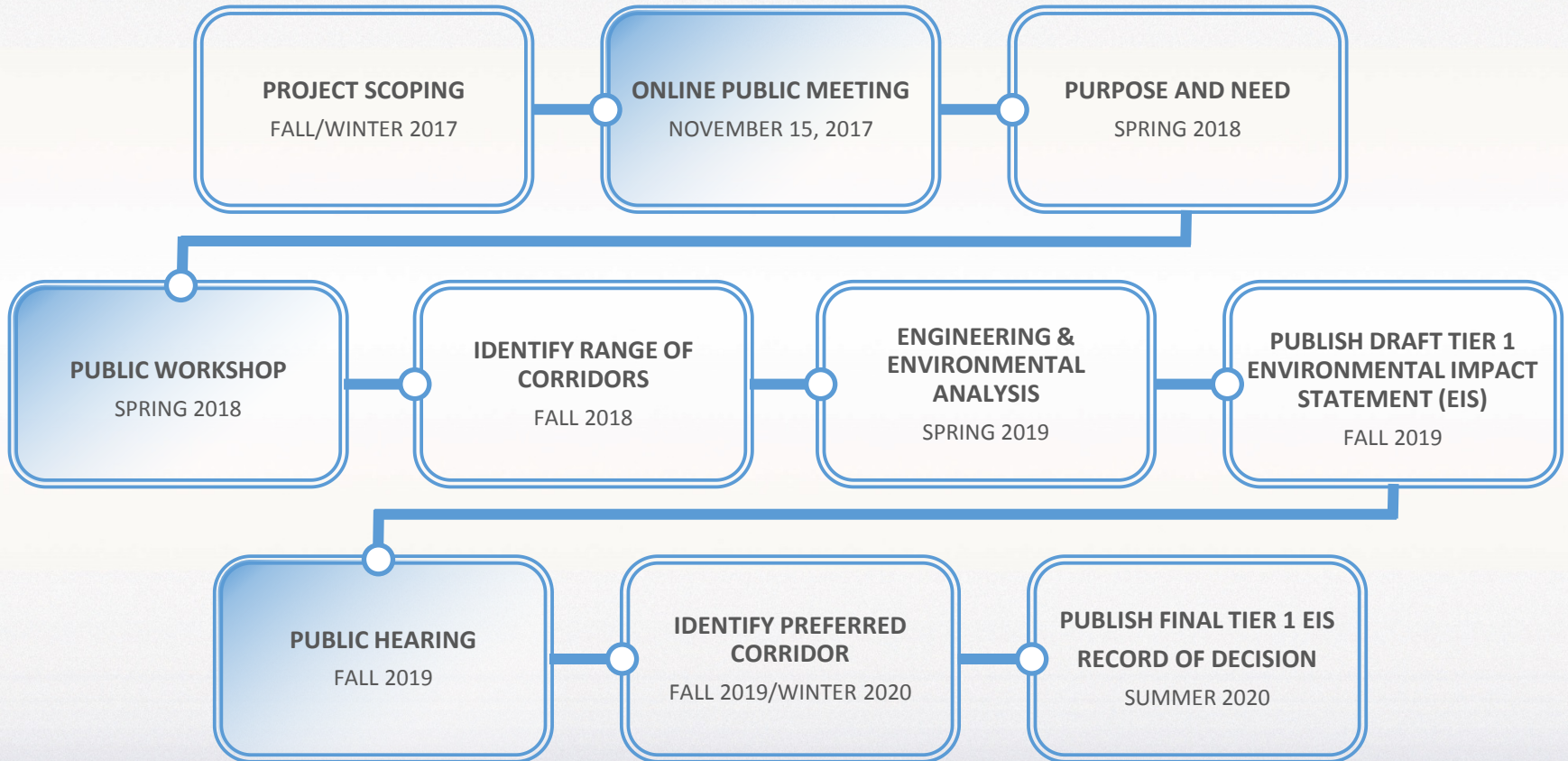
The study will address needs such as:

- Adequate Capacity
- Dependable and Reliable Travel Times
- Flexibility to Accommodate Future Maintenance and Rehabilitation

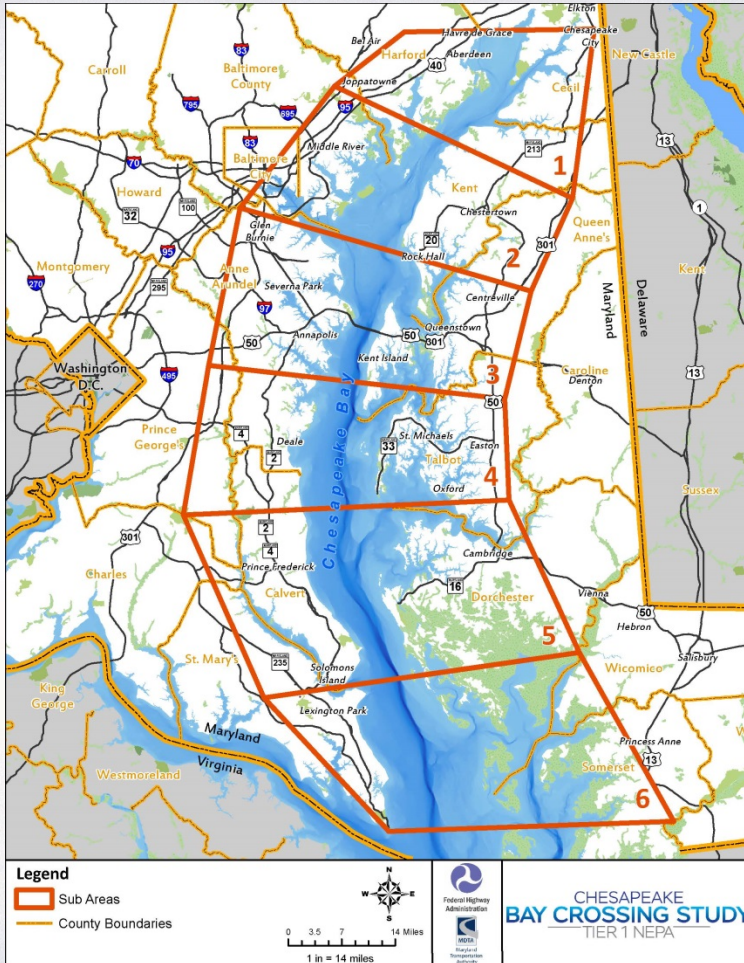
While taking into account:

- Financial Viability
- Environmental Responsibility

# Project Schedule



# Study Area and Sub Areas



*We look forward to receiving your comments!*

You can provide your comments in the following ways:

- Online: [baycrossingstudy.com](http://baycrossingstudy.com)
- Email: [info@baycrossingstudy.com](mailto:info@baycrossingstudy.com)
- Mail: Bay Crossing Study

Maryland Transportation Authority  
Div. of Planning & Program Development  
2310 Broening Highway  
Baltimore, MD 21224

Feel free to reference a sub-area as you provide comments.

The comment period for Scoping ends December 15, 2017.